

HNU Wireless registration Windows How-To

1. Choose **hnu-onboard** on list of wireless networks. See Fig. A

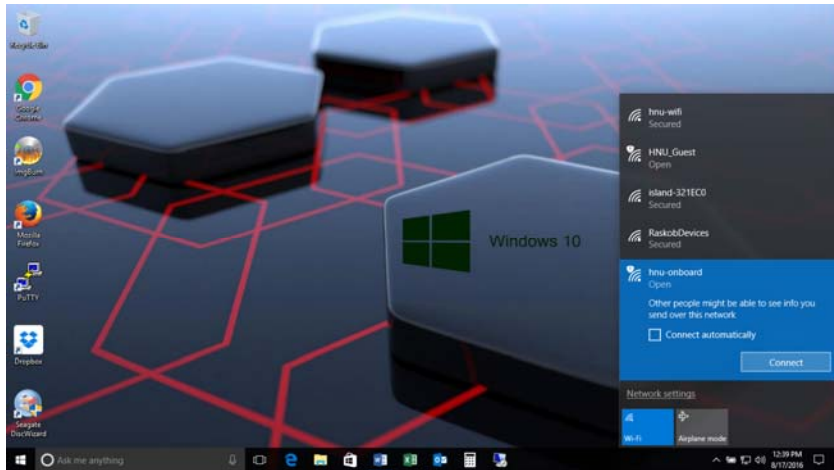


Fig. A

2. Your internet browser will pop up asking to join “hnu-onboard”, click to check the I Agree the terms and condition and click start. If the browser failed to pop up automatically, Open the browser of your choice and type in the address field <https://connect.hnu.edu>. Fig. B

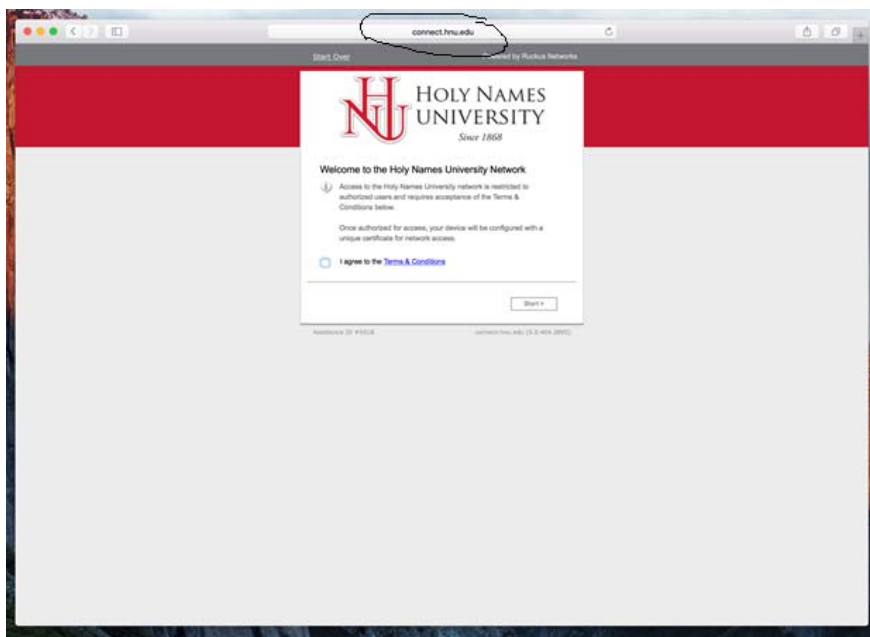


Fig. B

3. Click to select your group. See Fig. C

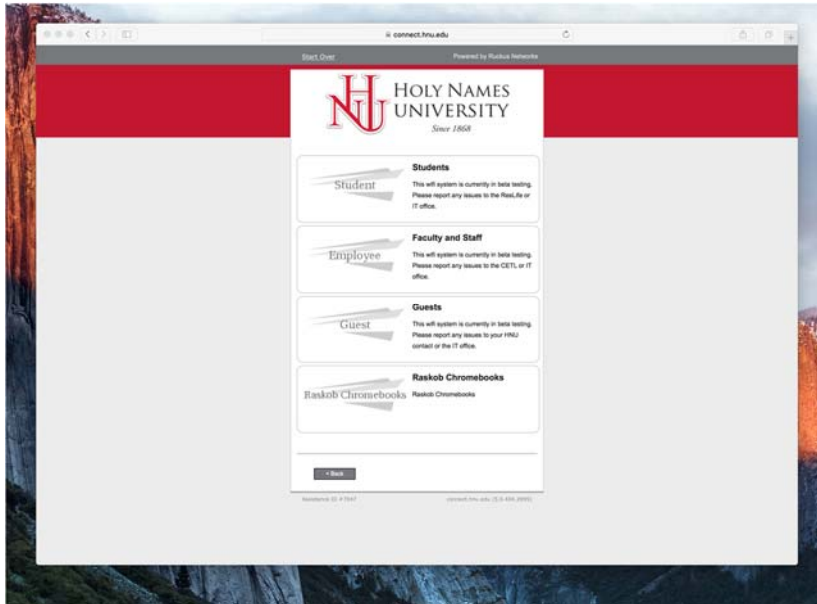


Fig. C

4. Enter your network login. See Fig. D

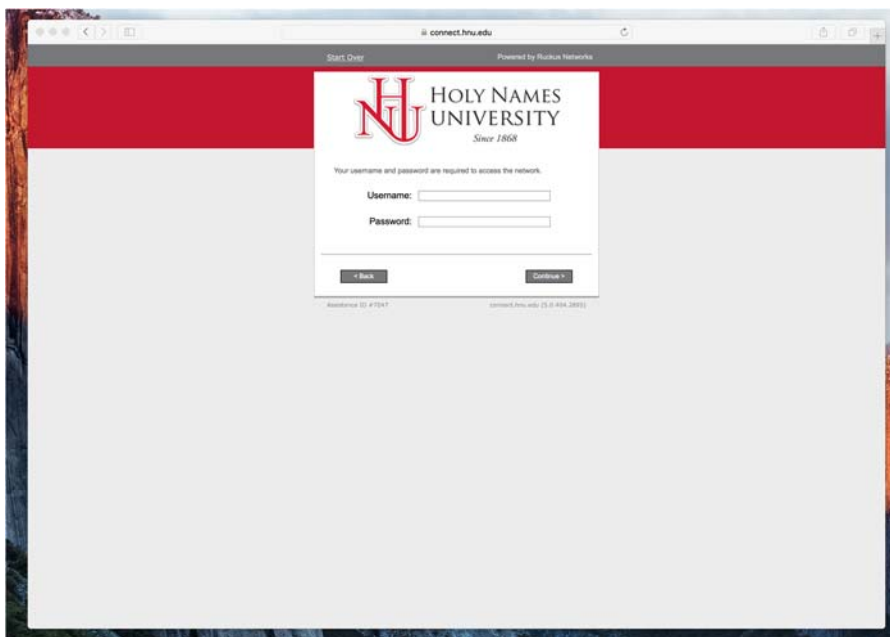


Fig. D

5. Click to download configuration file. See Fig. E

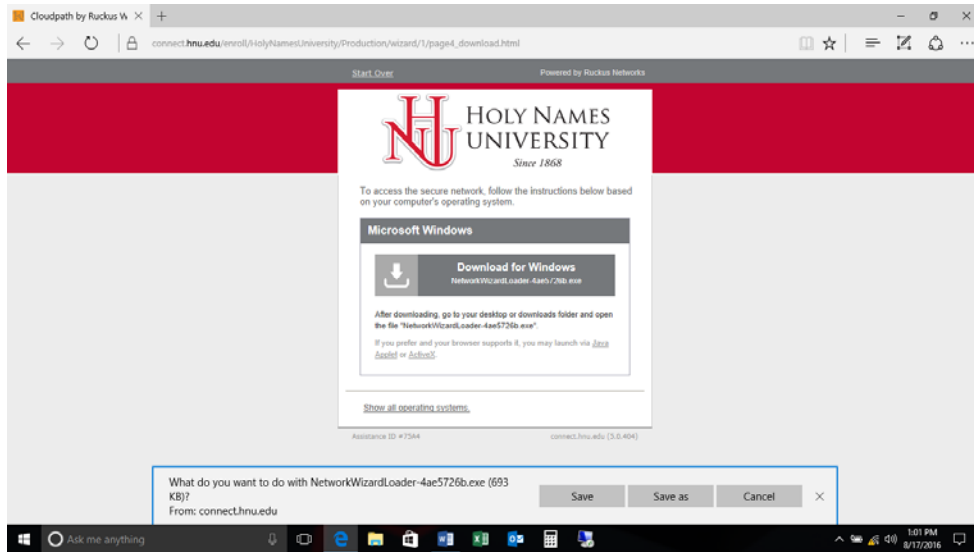


Fig. E

6. Locate the file "networkwizardloader" in your download folder and double click to run. See Fig. F

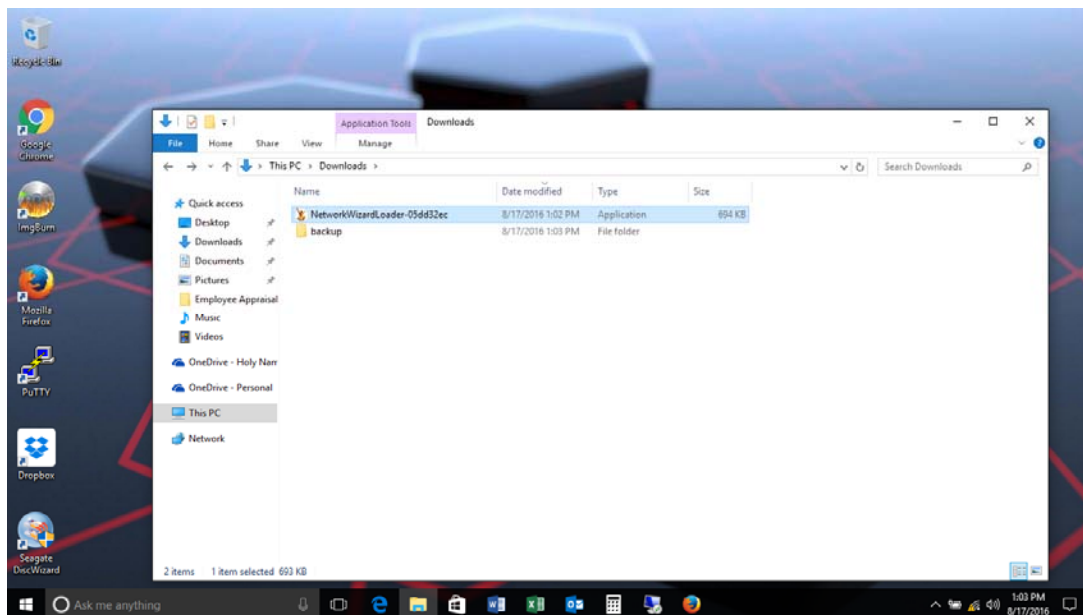


Fig. F

7. The installation will take about 3 minutes. Ignore the “not responding” message See Fig. G

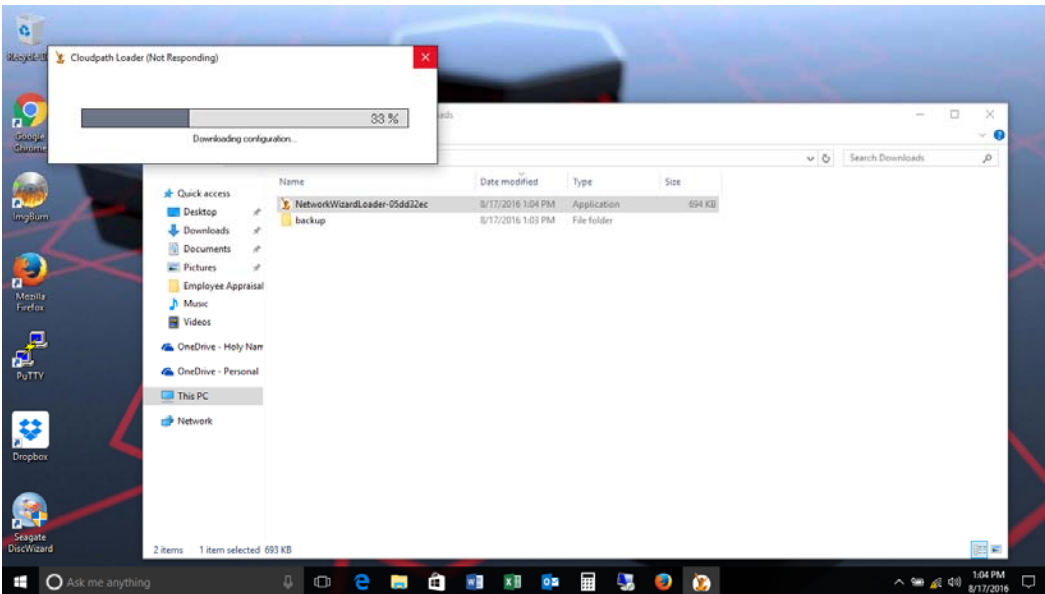


Fig. G

8. Successful installation will show a white check mark. Close the message. See Fig. H

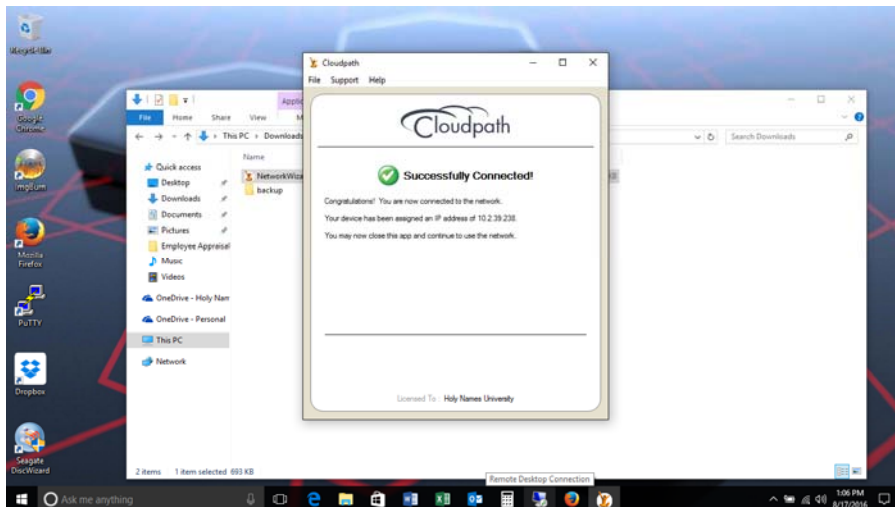


Fig. H

11. The computer should automatically connect to the hnu-wifi network. Check wireless networks to verify. See Fig. I

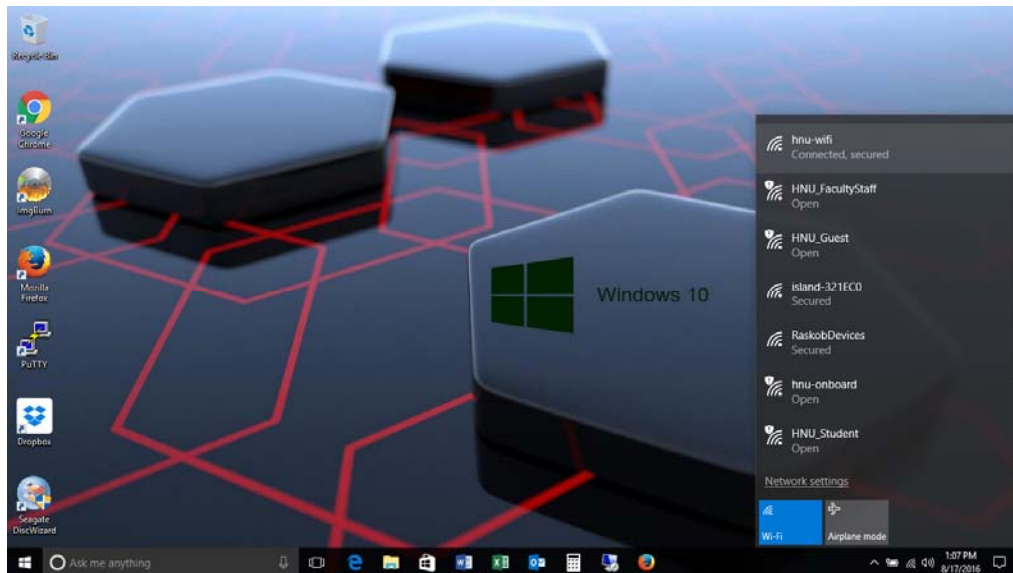


Fig. I